

Website

**Book the weed trailer
Landcare Vic**

Know your weeds



Brisbane Ranges Landcare Newsletter

News relevant to our local hills and plains!

Number 87 * February 2023

Guitars and Landcare – a match made in music!

This month, we are delighted to have Leigh Dicker, our local guitar craftsman, otherwise known as a luthier, come and talk to us about his work making guitars.

Leigh will discuss the timbers he selects, the construction process and why he chooses to donate to Landcare to be impact neutral.

Please join us for this interesting chat at the Balliang Hall at 7:30pm on **Wednesday February 22.**

Note that this is a revised date for our meeting this month.



Save the date



GUIDED SELF-DRIVE LITTLE RIVER CATCHMENT TOUR

DATE: 18.02.2023

TIME: 9.30AM - 3.00PM

START: MURPHY'S RD RESERVE,
STAUGHTON VALE, VIC

Little River Landcare have kindly invited us to join their tour examining aspects of the Little River Catchment.

The tour will stop at key sites to look at features and issues that affect the water availability, flow and quality. At each stop you will hear from water managers (eg, Barwon Water) or community representatives about the historical context and plans that will influence the Little River water flow and condition in the future.

This is a great opportunity to learn more about our local landscape.

[Learn more and register for the tour](#)



Koala Monitoring Program Feb Update

Things are still interesting in Koala land.

- Certain areas have been targeted and reports are being followed up with the aim to identify individual koalas eg Granite Rd, Staughton Vale Rd and McLeans Highway are the most active but we have isolated sightings spread from Steiglitz to north Brizzies near Reids Rd
- about 30 individual koalas have been identified over the year.
- The majority of these koalas have been seen only once but repeat sightings are increasing with a few seen quite regularly after the initial sighting.
- males are still bellowing - usually late afternoon and night and mating noises also heard
- We had only two sightings of a Koala with joey around the same time and in same area, No definite ID for the second sighting but is likely to be the same family. We also had one sighting with joey last koala season in Feb 22. FYI, Joeys in the You Yangs have started leaving their mums and are quite large now and about 12 months old

Many thanks to everyone involved. We could not have achieved this without your involvement.

Please respect their "safe space" and don't go too close to a koala tree (10m).

Avoid excess noise, be patient and you may be surprised.

Recently I watched a female (well known in our area) eating leaves. She then climbed 3m down to the ground and walked purposely straight towards me, leapt up into a tree, then across to another trunk and proceeded to eat fresh young leaves.



Committee news

All good things come to an end

Chris and Mary Winfield will be departing our area later this year. Chris was an inaugural member of this Landcare group and has been a reliable and competent Treasurer for 26 years. Yes, 26 years. Since our group's inauguration in 1997. Wow! We have been very lucky to have him in our group and sincerely thank him for his significant contributions over many years.

Mary has also been a long term contributor to the group. Landcare will not be the same without her scones!

A farewell will be held later in the year.

Positions Vacant

Would you like to help out and become Treasurer of our group? We will need you soon.

We are also seeking a Newsletter Editor. You will be well supported for content. You will be primarily responsible for layout and formatting in an easy to use application.

Please let the President know if you could help with either of these roles.

News round up

A round up of interesting events and other information.



Pollinators on your farm: Who, where and what do they do? – webinar
Tuesday, 28 February 2023 | 07:30 PM to 08:30 PM



Nest box Monitoring Webinar

Wednesday, 01 March 2023 | 06:30 PM to 07:30 PM

Join Tanya Loos for a webinar to learn about

In this webinar, Mark Hall will talk about which insects pollinate flowers and provide other ecosystem services that keep your farm healthy and productive.



Understanding and Managing Soil Biology on your farm Workshop - Tylden
Wednesday, 08 March 2023 | 10:00 AM to 02:30 PM

Declan McDonald will share his knowledge on soils, (physical, chemical and biological) and then travel to a farm property that is starting their journey in applying regenerative agricultural practice.

Tylden is an hour from Balliang.

nest boxes and the lovely marsupials that use them – the Brush-tailed Phascogale!

The webinar will explore why the Phascogale is an indicator of high quality habitat, and how you can help them thrive on your property.



Fencing and moveable stock water - Kyneton
Thursday, 16 March 2023 | 10:00 AM to 12:00 PM

Come along to a farm visit in Kyneton to investigate the use of a movable fence and trough system, which is used to improve grazing management.

Kyneton is 65 mins from Balliang.



New technology promises to make shearing sheep less of a drag

Click [here](#) to read about this machine that tilts the sheep into an ideal position for the shearer, who only has to catch and drag it about a metre. You can also view more information on shearing innovation on [this edition of Landline](#).

Landcare Resources

Need help on your property? These Internet resources offer good advice.



Weeds

Identify your weeds and make informed decisions about how best to control and manage them



Pest Animals

Control methods for deer, feral cats, feral goats, foxes, rabbits and the FeralScan app.



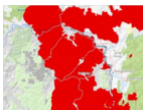
Moorabool Landcare Network

MLN is one of two networks we are in.



Geelong Landcare Network

We are members of GLN and MLN.



DELWP Mapping Tools

Free interactive mapping tools from the Dept of Environment, Land, Water and Planning



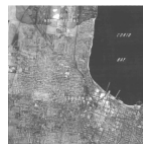
Traditional Owner Boundaries

for our area and across Victoria



Spatial Mapping Data

Great data resources from Vic Gov data that you can download and use for mapping



Historical Aerial Photography

What did your property once look like? Here's some links to answer that.



Moorabool Council Grants Information

Grant opportunities funded by Moorabool Council



Grants Hub

Register for this free email alert advisory service on grants from a wide variety of organisations



Melbourne Water Grants

Funding opportunities from Melbourne Water



City of Greater Geelong Grants

Grant opportunities from Greater Geelong Council

We acknowledge the Traditional Owners of this land, the Wadawurrung, and pay respect to their elders past, present and emerging.

BRLG Landcare

President: Robert Hall 0401-404-899

Secretary: Bart Bartholomew 0401-925-886

Treasurer: Chris Winfield 0429-484-644

You received this email because you signed up on our website or made a purchase from us.

[Unsubscribe](#)

Newsletter: We need you!!

