



# Brisbane Ranges Landcare Group

## Newsletter



Chair: Robert Hall 0401-404-899      Treasurer: Chris Winfield 0429-484-644      Acting Secretary: Allan Bartholomew 0401-925-886

Visit our website for latest news: <http://brlg.org.au>

Number 80

October 2021

### ***In this edition:***

Page 1	Next Members Meeting –AGM and join us for a movie!!
Page 2	Letter from our President
Page 3	Up and coming working bees
Page 3	Balliang Memorial Hall working bee
Page 3	Spring plantings
Page 5	Pesky plants to look out for
Page 7	Zero Emissions farming
Page 7	Sustainable Farms
Page 9	Port Phillip and Western Port Catchment Management Authority
Page 10	Grassy Eucalypt Woodland – Stewardship Program
Page 11	Thank you photographers!!
Page 11	In our Regular News.....
Page 12	Landcare Resources
Page 13	Last Laugh

### ***Next Members Meeting –AGM and join us for a movie!!***

Our next members meeting on Thursday 21<sup>st</sup> October is the 2021 Annual General Meeting. Formal proceedings commence at 7:30, then we are delighted to host an online screening of the documentary “The River Moorabool” at 8pm (further information below). The producer Cameron Steele who features prominently in the documentary, will be joining us online afterwards to answer any of your questions. Cameron is the Coordinator of “People for A Living Moorabool” (PALM).

### **Brisbane Ranges Landcare Group Annual General Meeting**

**Date:** Thursday, 21st October

**Times:** 7:30pm - Brisbane Ranges Landcare AGM (members required but all welcome)

8:00pm - Screening of The River Moorabool (everyone welcome)

9:00pm - Q&A

9:30pm - Close

As well as to elect our office bearers and to report on our activities and finances for 2021, please join us for the AGM as we'd love to hear from our members. It has been a long year without seeing many of you and we'd love to see and hear how our Landcare group can work for you in 2022.

To attend, please make a booking [by clicking here](#) so we can send you a zoom link beforehand. Please register the day before the screening to receive the Zoom link in time.

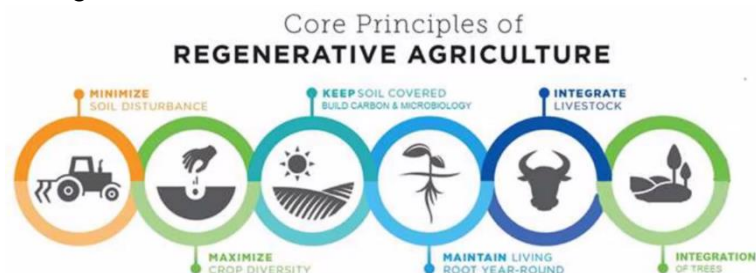
### **Screening of "The River Moorabool"**

"The River Moorabool" showcases some of the beautiful gorge country through which the river flows and explains the many issues facing the river, which is regarded as the most flow stressed in the State.

The Moorabool River is of particular importance for our Landcare area as flow calculations for the Sustainable Water Strategy include Little River as part of the Moorabool catchment.

### ***Letter from our President***

RegenAg is a bit of a buzzword I guess, meaning different things to different people. A little bit like "sustainability". I have been fortunate to attend an online regenerative agriculture course. Whilst it is focused on the Mornington Peninsula, the course is clarifying concepts and showing me how little I know! I thought I would share some of the materials and resources in case it is of interest to others. You can access them on [my Google Drive here](#). I'll keep saving them as the course progresses through the content. The YouTube links are probably the most easily accessible content.



Session 1: Introduction to Regen Ag – myths and misconceptions

Session 2: Minimum disturbance & maximise soil coverage, monitor soil function and changes (managing soils on a broader level)

Session 3: Maximise crop diversity & living roots (focus on crop diversity - multi species, rotations, green crops, different plants, root diversity)

Session 4: Integration of livestock

Session 5: Integration of trees (emphasis on biodiversity & landscape function)

Session 6: Financial indicators and measuring what matters

Session 7: Transitioning to Regenerative Agriculture

Cheers,  
Robert Hall

## ***Up and coming working bees***



Covid restrictions put a large dampener on our working bees this year, but we have a few months left and are keen to get out there and get some projects completed for 2021. We have two working bees left for 2021. Both between 10am and 12pm. Even if you can only make it for an hour, we'd love to see you and your presence will make a big difference.

Dates for your diary:

### **Sunday 7th<sup>st</sup> November - Prickly Pear**

It will be a task to take the prickly pear on, but it will be satisfying to get rid of this prickly pest! Most of the prickly pear is at the East Balliang Hall, but there are a few other patches in the local area. Bring along your garden forks and tongs to handle the cactus. Balliang East Hall at 10am.

**Sunday 12 December** - Blanket weed clean up Murphy's road and/or Staughton Vale Road. Again, bring along your gardening forms and maybe a bucket to collect up the blanket weed to collect for burning later on. We will hopefully have a few people with a good eye on the day to help with poisoning, to ensure we don't poison other vegetation. Meet at the triangle at 10am.

## ***Balliang Memorial Hall working bee***



In true community spirit, some of our Landcare members popped down to the hall in the morning on Sunday 10<sup>th</sup> October to join the Balliang Hall Committee to give the hall a quick spruce up!

There was some sweat, some laughs and some chocolate truffles making the time go very quickly, but best of all, the Hall is well on the way to looking her best!

There are likely to be a few more working bees coming up in the lead up to preparing the Hall, and we will be sure to keep you all informed when we get some dates.

## ***Spring plantings***

Koala Clancy kindly donated over 1000 trees this spring, all of which were quickly snapped up. Great news for all, especially our koalas. The trees on offer included:

- River red gum 500+
- Grey box 100+
- Red box approx 50
- Yellow gum approx 50

- Prickly tea-tree 100+
- Woolly tea-tree approx 50
- River bottlebrush 100+
- Blackwood 50+

The Werribee River Association also kindly offered to donate thousands of native plants, after a planned planting day had to be cancelled due to lockdowns. Some of our locals took up the offer and planted trees to “help out our local Koala population, to attract local wildlife and to provide shade for stock.” Thanks to Tom, Shelley, Scarlet, Annabelle and Olivia for the photo.



Thankfully before planting, we were lucky to find out that some of the plants on offer from Werribee River Association were Acacia Longifolia. None of these were planted being a known pest within the Brisbane Ranges. See further information below regarding Acacia Longifolia.



From the 300 trees donated from 15 Trees, 70 trees/shrubs were planted at the Balliang East Hall. Another great use of the donated trees from 15 trees!! Well done and thank you to those that assisted with the planting at the Balliang East Hall.



## ***Pesky plants to look out for***

**Acacia longifolia** is a species of Acacia endemic to coastal areas of south-eastern Queensland close to the border with New South Wales, extending southward down the coast of New South Wales. In New South Wales it is common along the tablelands and coastal areas where it is situated in various habitats including foredunes and is usually a part of sclerophyll woodland or coastal heath and scrub communities. The range then extends south and east through Victoria and into South Australia. In South Australia it is found on the Eyre Peninsula, Yorke Peninsula, Kangaroo Island, southern Lofty Ranges and throughout the south eastern region where it is mostly restricted to sand dunes.

### **Common names:**

- long-leaved wattle,
- acacia trinervis,
- aroma doble,
- golden wattle,
- coast wattle,
- sallow wattle and
- Sydney golden wattle.



It is not listed as being a threatened species and is considered invasive in Portugal and South Africa and of course the Brisbane Ranges. In the southern region of Western Australia, it has become naturalised and has been classed as a weed by out-competing indigenous species. It is a tree that grows very quickly reaching 7–10 m in five to six years. It is thought to have been introduced by escaping from gardens and being used in restoration plantings.



**Flowering time:** July-October



### **Control methods:**

Hand pulling seedlings, ringbarking or using glyphosate on older plants.

**Austral Indigo** (*Indigofera australis*) is native to our area and although beautiful, take caution planting this if you have dogs and horses.

The Australian Broadcasting Corporation (ABC) posted an article where 6 horses and 24 dogs were lost to this native plant. For the article, click on the following link:

<https://www.abc.net.au/news/rural/2021-09-30/indigofera-poisoning/100500520>



*Indigofera australis*, the Australian indigo or Austral indigo, is an attractive species of leguminous shrub in the genus *Indigofera* (family Fabaceae). The genus name *Indigofera* is Neo-Latin for "bearing Indigo" (Indigo is a purple dye originally obtained from some *Indigofera* species). *Australis*, from the Latin, means not "Australian" but "southern", referring to the geographical distribution of the species.

### Description

Its natural habit is upright, to 2 m (7 ft) high, with flexible stems. The leaves are pinnate, openly spaced on the stems, around 10 cm long and velvety smooth to the touch. The flower color is unusual, ranging through soft purple hues, often pinkish and a change from other species flowering at the same time. The flowers are smooth, in short spires in the leaf axils, freely produced and showy, outlining the curves of the stems. They may open at any time from mid-September and may continue till November in a cool spring. It can regrow and sucker from rootstocks and lateral roots after fire.

### Distribution

A very common and widespread species in Australia, *Indigofera australis* grows in a variety of different habitats, mainly open woodland and eucalypt forest, but also in desert and in the margins of rainforest. It is widespread in southern Australia from the southeastern Western Australia to northeastern Queensland.

### Habitat value

It is an excellent habitat plant for wildlife. The flowers are a pollen and nectar source for many native insects, including bees and wasps. The plant is a useful food plant for butterfly larvae (caterpillars).

### Uses

The attractive flowers, and the plants adaptability to grow in different situations make it suitable as an ornamental plant in Australia.

The Australian Aborigines crushed the leaves and added these to water to kill or stun fish and eels.

## ***Zero Emissions farming***

Getting carbon back into our soils is a great way of improving soil pasture and plant health and there is a great potential to capture and store carbon from the atmosphere in carbon sinks such as trees and soils.



A one-day conference will explore the benefits of zero-emission farming, showcasing the latest research and technology information, and industry progress towards CN2050.

**Date:** Wednesday 17<sup>th</sup> November 2021

Face to face and online event

Topics will include:

- Carbon Neutrality on the red meat industry
- Mornington peninsula approach to wine sustainability
- Managing farm dam emissions
- Agroforestry: multiple benefits of trees on farms
- Agribusiness banking approach to agribusiness risk and interest in carbon farming

This is a free, face to face event held in Red Hill South on the Mornington Peninsula that will also be live streamed. Full details will be confirmed soon, and registration will open mid-October.

The event is supported by the Port Phillip and Western Port CMA with funding from the Australian Governments National Landcare Program, the National Recovery and Resilience Agency and Morning Peninsula Shire, in partnership with Melbourne Water and AUSVEG.

[Learn more](#)

## ***Sustainable Farms***

While doing research for our October newsletter, I was lucky enough to stumble across a webinar hosted by Sustainable Farms, about planning and planting to maximise the potential of farm dams. Dam health and planting has been of great interest for us in recent years and although I missed the webinar, they do offer a PDF guide on the website (details below). For us who have only been living the Brisbane Ranges for 7 years, I found the information on the website interesting. Although some of this may be old news for some who have been farming for decades, I hoped that the website might be interesting for our members.



Sustainable farms was developed after two decades of research by the Australian National University (ANU), and data collected from over 300 farmers engaged in sustainable farming from north-east Victoria to south-east Queensland. It is one of the largest, long-term studies of its kind in the world. Sustainable farms now translate these findings to help all farmers better manage the balance between agricultural production and long-term sustainability and to be more profitable along the way.

Sustainable farms identify that with a growing population, the demand and pressure to increase food and fibre production has never been stronger. Yet the challenges to meet such demand weigh heavily. Soil erosion, salinity, climate variations, and pest and weed control are just some of a farmer's constant concerns.

Sustainable farms vision is to create a sustainable future for Australian farmers by building on 20 years of agricultural research in agricultural landscapes to better understand relationships between environmental management, mental health, and financial success. The Sustainable Farm team encompass researchers in environmental accounting, economics, and finance, and mental health, in addition to program evaluation and coordination, communications and field-based staff. Importantly, our field staff live and work in agricultural landscapes.

### **Planning & planting to maximise the potential of farm dams**

Native vegetation in and around a farm dam has many benefits for water quality, farm productivity and biodiversity.

The guide, available by clicking the link below, provides lists of plants suitable for the different zones of a farm dam — inflow, margins, shallow and deep water, dam wall and spillway. Strategically planting just a few plants from each list will contribute to a healthy dam. This guide focuses on grasses, herbs, sedges and aquatic plants — it does not include shrubs or trees for planting further back from the dam edge. Draw on the expertise of your local Landcare, Local Land Services or Catchment Management Authority for more information on shrubs and trees native to your region. The guide was developed for regions within the Sustainable Farms project area being mainly NSW and North East Victoria. However, the plants listed are generally available at native plant nurseries. Local availability may vary, but the guide provides a range of options to choose from.



[http://sustainablefarms.org.au/sites/default/files/Farm%20Dam%20Planting%20Guide%20brochure%208.2\\_low%20res.pdf](http://sustainablefarms.org.au/sites/default/files/Farm%20Dam%20Planting%20Guide%20brochure%208.2_low%20res.pdf)

Would you like to know more about Sustainable Farms? To hear more from our participating farmers and team, [subscribe to the newsletter](#), or email sustainable farms on [sustainablefarms@anu.edu.au](mailto:sustainablefarms@anu.edu.au).



## **Port Phillip and Western Port Catchment Management Authority**



### **The Healthy Landscapes project**

This Practical Regenerative Agricultural Communities program aims to raise awareness in their community about sustainable land management practices that improve soil health, reduce exposure to climate risk, enhance biodiversity and increase on-farm productivity.

This program is being delivered as a partnership between Macedon Ranges Shire Council, Hepburn Shire Council, the City of Greater Bendigo, A Healthy Coliban Catchment project (North Central Catchment Management Authority and Coliban water), Melbourne Water, and the Upper Campaspe Landcare network.

The Healthy Landscapes project has a range of webinars that may be of interest to you. I have added links below to two upcoming events but click the link below to see what else is available.

<https://www.mrsc.vic.gov.au/Live-Work/Environment/Land-Management/Healthy-Landscapes#section-1>

### **Grass and Pasture plant identification**

Do you want to be able to identify, understand and manage wild grasses? Join Dr Graeme Lorimer, an Environmental Scientist with 32 years of training people about grasses, for a webinar followed by a workshop.

**Webinar:** 26<sup>th</sup> October, 7:30-9pm

#### **Workshop/Field days:**

- Redesdale – Friday – 26 Nov 2021, 10am – 2pm
- Eganstown (Daylesford) – Friday – 26 Nov 2021, 3.30pm – 7pm
- Darraweit Guim – Saturday – 27 Nov 2021, 10am – 2pm



Field days require separate registration.

This event is being delivered by the PPWCMA's Deepening Connections Project in partnership with Macedon Ranges Shire Council's Healthy Landscapes program with the support of the Victorian Government.

For more information and to register, click the following link: <https://hlprac.eventbrite.com.au/>

## Horse Owners Field day discussion group

Join a field day for horse owners who wish to improve their land, pastures, soil and the health of their horses.

This free event is a meeting for horse owners that wish to improve their land, pastures, soil and the health of their horses. The New Gisborne property which is hosting the event has drawn on central point yard and track systems and is using planned grazing to develop strong, healthy, diverse pastures. This management strives to contribute to biodiversity and healthy waterways while efficiently managing the horses and their health.

Once registered, the property address will be sent to you prior to the event.

Be aware this is an outside event, so make sure you wear appropriate clothing and footwear.



To register, select the following link:

[Horse Owners Field Day Discussion Group Tickets, Sun 24/10/2021 at 10:00 am | Eventbrite](#)

## *Grassy Eucalypt Woodland – Stewardship Program*

Geelong Landcare Network in partnership with Corangamite Catchment Authority is hosting free information workshops.

**Monday Oct 18th 1-3pm - Inverleigh, OR**  
**Saturday October 30<sup>th</sup> 1-3pm – Sutherlands Creek**



- discover what Grassy Eucalypt Woodlands are
- learn about the fauna that call these habitats home
- understand the cultural significance of these areas
- hear what the funding supports
- come on a tour of a property already in the stewardship program
- and see how its managed within a productive farming system
- talk with the CCMA about your unique property

The Grassy Eucalypt Woodlands Stewardship Program aims to protect critically endangered Grassy Eucalypt Woodlands on the Victorian Volcanic Plain that remain on private land. Funding is available to support the conservation and regeneration of these critically endangered areas. This project is supported by Corangamite CMA, through funding from the Australian Government's National Landcare Program. As part of this program we will also be running a plant ID & seed collection workshop in December.

Bookings are absolutely essential due to covid restrictions on attendee numbers.



For further information and bookings contact Jo Solomon 0438 828 042 or click on the following link: <https://geelonglandcarenetwork.org.au/grassy-eucalypt-woodlands>

## ***Thank you photographers!!***

A huge thank-you to our local photographers for sharing their images for the 2022 Brisbane Ranges Landcare Group Calendar!!! The production of the calendar is nearly complete and looking amazing. Here's a sneak peak of the front page.

This fundraising event for BRLG will support projects for our members for the coming year.

To make this a worthwhile fundraiser for our group, this year the cost per Calendar will be \$20. For those already wanting to place an order, send it through to Robert at the BRLG email address: [newsletter.brlg@gmail.com](mailto:newsletter.brlg@gmail.com)



I've already ordered ours and one for each of the grandparents who now ask for their copy every Christmas!!

Start spreading the word and make this the Calendar everyone wants to put on their toilet door!!

## ***In our Regular News.....***

### **Weeds Website**

Weeds Australia website is designed to connect you with knowledge to make informed decisions about managing invasive weeds within Australia. The site includes an extensive list of 398 weeds profiles to help you better identify, plan and manage your weed problem.

<https://weeds.org.au/>



### **BRLG Weed Sprayer**

Available for use by BRLG members. Please contact Chris Winfield on 0429 484 644 to discuss your spraying needs.



## Landcare Resources

I want to know about...	Here is a good place to start...
Aboriginal cultural heritage location mapping	<a href="https://www.vic.gov.au/aboriginalvictoria/heritage/heritage-tools-and-publications/heritage-tools.html">https://www.vic.gov.au/aboriginalvictoria/heritage/heritage-tools-and-publications/heritage-tools.html</a> then select "online map tool"
Biodiversity mapping and recording	<a href="http://maps.biodiversity.vic.gov.au/viewer/?viewer=NatureKit">http://maps.biodiversity.vic.gov.au/viewer/?viewer=NatureKit</a> <a href="http://natureshare.org.au/">http://natureshare.org.au/</a> <a href="http://avh.chah.org.au/">http://avh.chah.org.au/</a>
Boxthorn	<a href="http://weeds.ala.org.au/WoNS/africanboxthorn/docs/African_boxthorn-national_best_practice_manual.pdf">http://weeds.ala.org.au/WoNS/africanboxthorn/docs/African_boxthorn-national_best_practice_manual.pdf</a>
Chilean needle grass	<a href="https://www.environment.gov.au/biodiversity/invasive/weeds/publications/guidelines/wons/pubs/n-neesiana.pdf">https://www.environment.gov.au/biodiversity/invasive/weeds/publications/guidelines/wons/pubs/n-neesiana.pdf</a>
Feral goat control	<a href="https://www.pestsmart.org.au/pest-animal-species/feral-goat/">https://www.pestsmart.org.au/pest-animal-species/feral-goat/</a>
Fox control	<a href="https://www.pestsmart.org.au/pest-animal-species/european-fox/">https://www.pestsmart.org.au/pest-animal-species/european-fox/</a>
Gorse	<a href="https://www.environment.gov.au/biodiversity/invasive/weeds/publications/guidelines/wons/pubs/u-europaeus.pdf">https://www.environment.gov.au/biodiversity/invasive/weeds/publications/guidelines/wons/pubs/u-europaeus.pdf</a>
Landcare networks	<a href="#">Moorabool Landcare Network</a> <a href="#">Geelong Landcare Network</a>
Melbourne Water Stream Frontage Grants	<a href="https://www.melbournewater.com.au/community-and-education/apply-funding/stream-frontage-management-program">https://www.melbournewater.com.au/community-and-education/apply-funding/stream-frontage-management-program</a>
Rabbit management	<a href="http://www.mln.org.au/images/PDFS/rabbitactionguide.pdf">http://www.mln.org.au/images/PDFS/rabbitactionguide.pdf</a> <a href="https://www.pestsmart.org.au/pest-animal-species/european-rabbit/">https://www.pestsmart.org.au/pest-animal-species/european-rabbit/</a>
Serrated tussock	<a href="https://www.environment.gov.au/biodiversity/invasive/weeds/publications/guidelines/wons/pubs/n-trichotoma.pdf">https://www.environment.gov.au/biodiversity/invasive/weeds/publications/guidelines/wons/pubs/n-trichotoma.pdf</a>
Weeds - identification and control	<a href="http://agriculture.vic.gov.au/agriculture/pests-diseases-and-weeds/weeds/a-z-of-weeds">http://agriculture.vic.gov.au/agriculture/pests-diseases-and-weeds/weeds/a-z-of-weeds</a>
Weed status in Victoria	<a href="http://agriculture.vic.gov.au/agriculture/pests-diseases-and-weeds/weeds/invasive-plant-classifications">http://agriculture.vic.gov.au/agriculture/pests-diseases-and-weeds/weeds/invasive-plant-classifications</a> <a href="http://agriculture.vic.gov.au/agriculture/pests-diseases-and-weeds/protecting-victoria-from-pest-animals-and-weeds/legislation-policy-and-permits/declared-noxious-weeds-and-pest-animals-in-victoria">http://agriculture.vic.gov.au/agriculture/pests-diseases-and-weeds/protecting-victoria-from-pest-animals-and-weeds/legislation-policy-and-permits/declared-noxious-weeds-and-pest-animals-in-victoria</a>

*Last*  *Laugh*

Thank you Nina Bird for sharing this one with us!! I am sure many of us can now relate.



**This is Wilson. He is now  
working from home 😊**

